

Updated Map

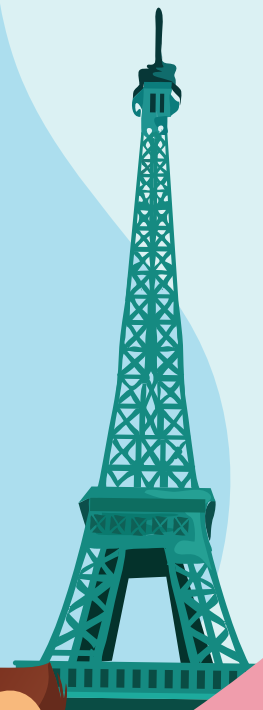


SPECIAL  
EDITION

# GK Smart

4

A SERIES BASED ON MULTIPLE INTELLIGENCES



Dr Sumanth C Raman

ISBN: 978-93-89466-67-6

Please refer to the updated map of India and the question given below in place of the map and question given on page 23 of the coursebook.

**Identify the hill stations shown on the map with the help of the images given.  
Fill in the blanks to find their names.**

